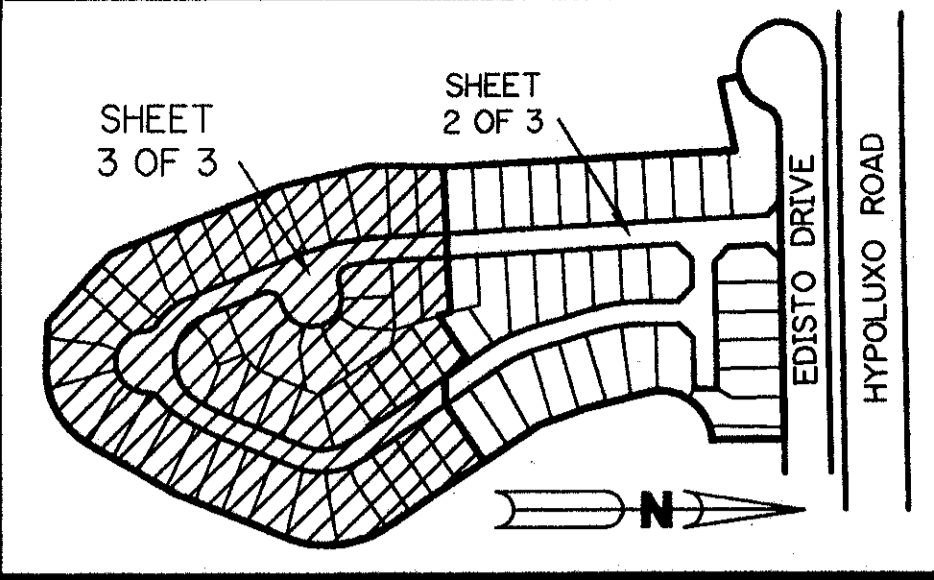


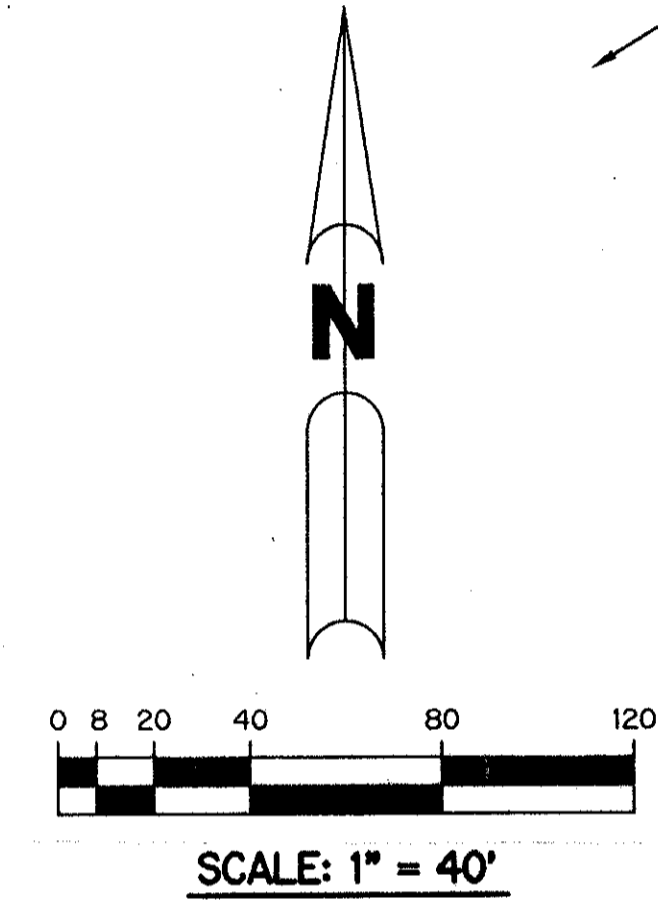
LAKE CHARLESTON - TRACT "H"

BEING A REPLAT OF ALL OF TRACT "H" ACCORDING TO THE PLAT OF LAKE CHARLESTON PLAT NO. 3 - P.U.D. AS RECORDED IN PLAT BOOK 62, PAGES 55 THROUGH 68, INCLUSIVE, OF THE PUBLIC RECORDS OF PALM BEACH COUNTY, FLORIDA. SECTION 9, TOWNSHIP 45 SOUTH, RANGE 42 EAST

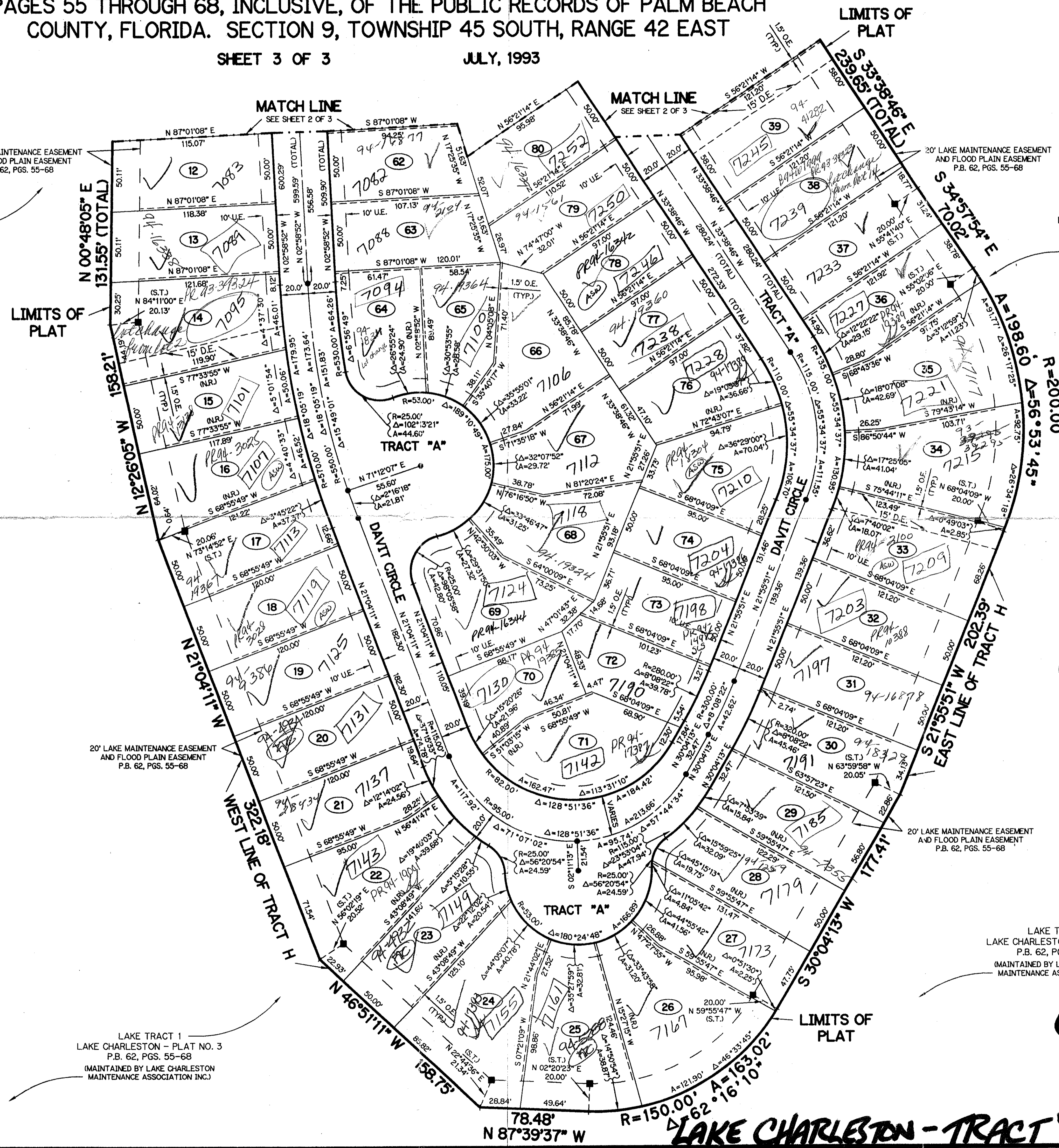
SHEET 3 OF 3 JULY, 1993



KEY MAP N.T.S.



- LEGEND:**
- - PERMANENT REFERENCE MONUMENT, P.L.S. #4213
 - - PERMANENT CONTROL POINT, P.L.S. #4213
 - Δ - DELTA ANGLE
 - D.E. - DRAINAGE EASEMENT
 - F.E. - FLOOD PLAIN EASEMENT
 - L.A.E. - LIMITED ACCESS EASEMENT
 - L.M.E. - LAKE MAINTENANCE EASEMENT
 - N.R. - NOT RADIAL
 - O.R. - OFFICIAL RECORD
 - O.R.B. - OFFICIAL RECORD BOOK
 - O.S. - OPEN SPACE
 - P.B. - PLAT BOOK
 - P.G.S. - PAGES
 - P.L.S. - PROFESSIONAL LAND SURVEYOR
 - P.U.D. - PLANNED UNIT DEVELOPMENT
 - R - RADIUS
 - R.O.W. - RIGHT-OF-WAY
 - S.T. - SURVEY TIE LINE
 - U.E. - UTILITY EASEMENT
 - O.E. - OVERHANGING EASEMENT



LAKE TRACT 1
LAKE CHARLESTON - PLAT NO. 3
P.B. 62, PGS. 55-68
(MAINTAINED BY LAKE CHARLESTON
MAINTENANCE ASSOCIATION INC.)

PET. 86-96C
ALLOC. #0013
W/ASSIGNMENT LETTER

NOTE: THE FLOOD PLAIN EASEMENT WITHIN THE RESIDENTIAL LOTS ARE SUBJECT TO FLOODING DURING THE THREE YEAR, TWENTY-FOUR HOUR RAINFALL EVENT.

LAKE TRACT 1
LAKE CHARLESTON - PLAT NO. 3
P.B. 62, PGS. 55-68
(MAINTAINED BY LAKE CHARLESTON
MAINTENANCE ASSOCIATION INC.)

0533-023
71/180

THIS INSTRUMENT PREPARED BY
PERRY C. WHITE P.L.S. 4213 STATE OF FLORIDA
LAWSON, NOBLE AND ASSOCIATES, INC.
ENGINEERS PLANNERS SURVEYORS
WEST PALM BEACH, FLORIDA

LAKE TRACT 1
LAKE CHARLESTON - PLAT NO. 3
P.B. 62, PGS. 55-68
(MAINTAINED BY LAKE CHARLESTON
MAINTENANCE ASSOCIATION INC.)

SUBDIVISION * TRACT H
BOOK 71 PAGE 178
FLOOD ZONE B FLOOD MAP # 185A
QUAD # 49 ZONING RTS
SE 86-96 ZIP CODE 33437
PUD NAME LAKE CHARLESTON
TAZ 439

LAKE CHARLESTON - TRACT "H"